



# SciBooNE (E954) status

Hide TANAKA

Columbia University

Mar. 31, 2008 @AEM

# Week Summary Mar. 23 - Mar. 29

- Booster Neutrino Beam

- Running well

- Uptime fraction: 87.1%

- MI/Booster/Linac access

- Linac power supply problem

- Linac RF problem

- Averaged protons/hr:  $1.32E16$

- Averaged protons/pulse:  $3.74E12$

- SciBooNE detectors

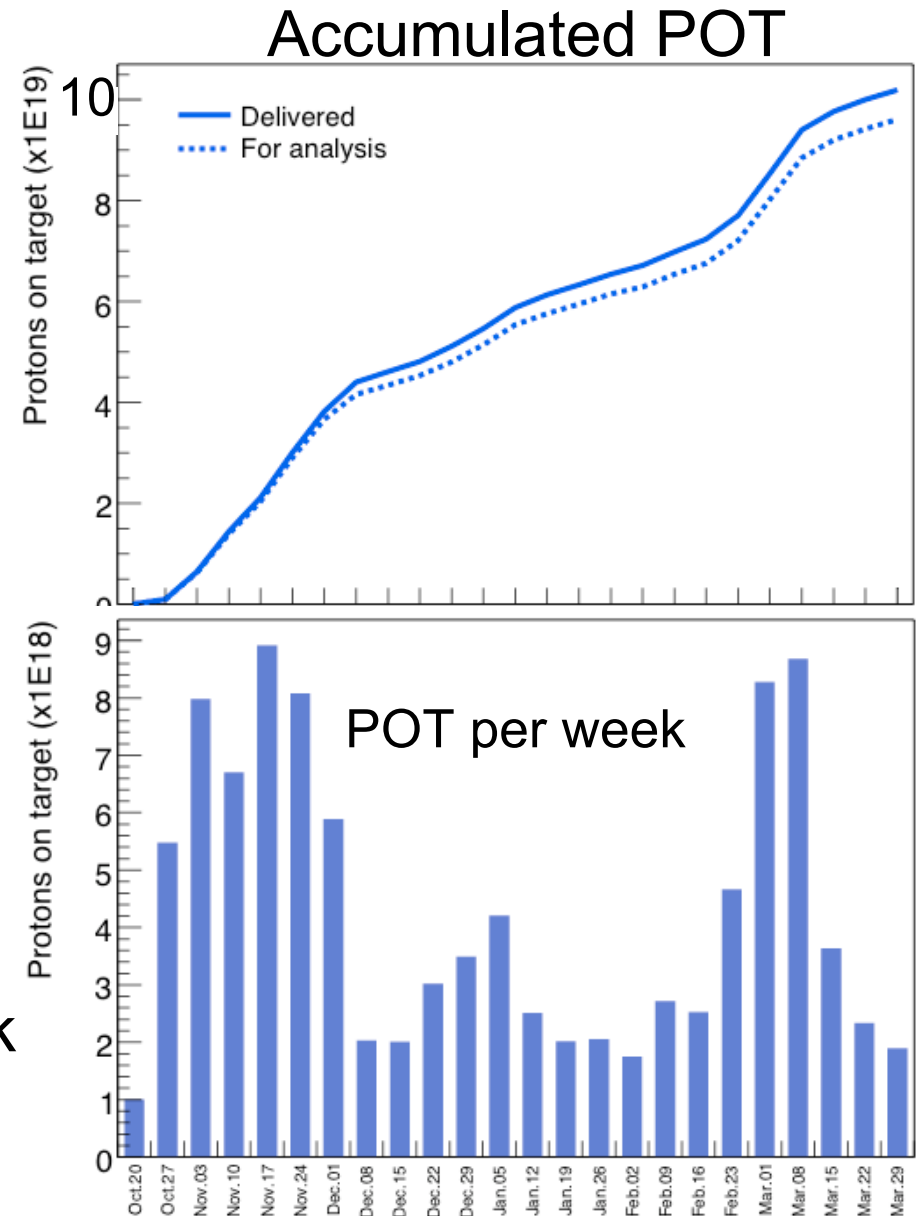
- All detector systems are stable

- No major problem

- Detector uptime (period with beam on): 98.8%

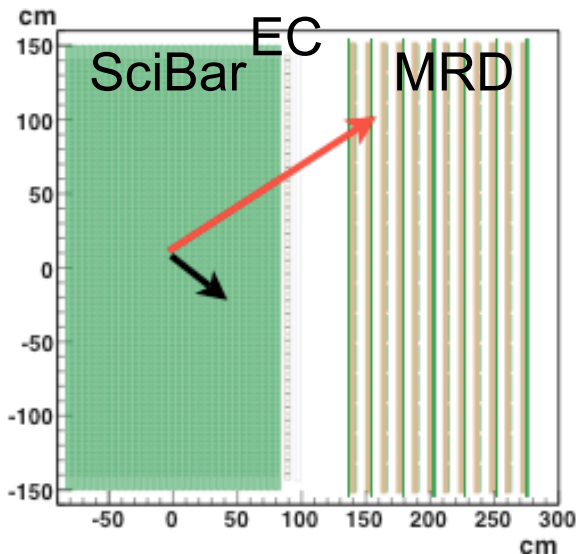
# Protons On Target

- POT (Mar 23 - Mar 29)
  - 1.89E18 POT delivered,
  - 1.87E18 POT for physics.
- Total POT so far: 9.6E19  
(Projected POT for  $\nu$ : 1E20)
  - For physics: ~0.04E20 left
- Will switch horn polarity ( $\nu \rightarrow \bar{\nu}$ ) April 14
  - Expected duration: ~1.5week



# POT normalized event rate

- Charged current event candidates in SciBar.
- Stable within stat. error.
- ➔ Stable operation of beam & detector.



## Event rate per week

