



SciBooNE (E954) status

Hide TANAKA
Columbia University

Apr. 7, 2008 @AEM

Week Summary Mar. 29 - Apr. 5

- Booster Neutrino Beam

- Running smoothly

- Uptime fraction: 59.4%
 - MI/Booster/Linac access
 - Linac RF problem
- Averaged protons/hr: $2.80E16$
- Averaged protons/pulse: $2.40E12$

- SciBooNE detectors

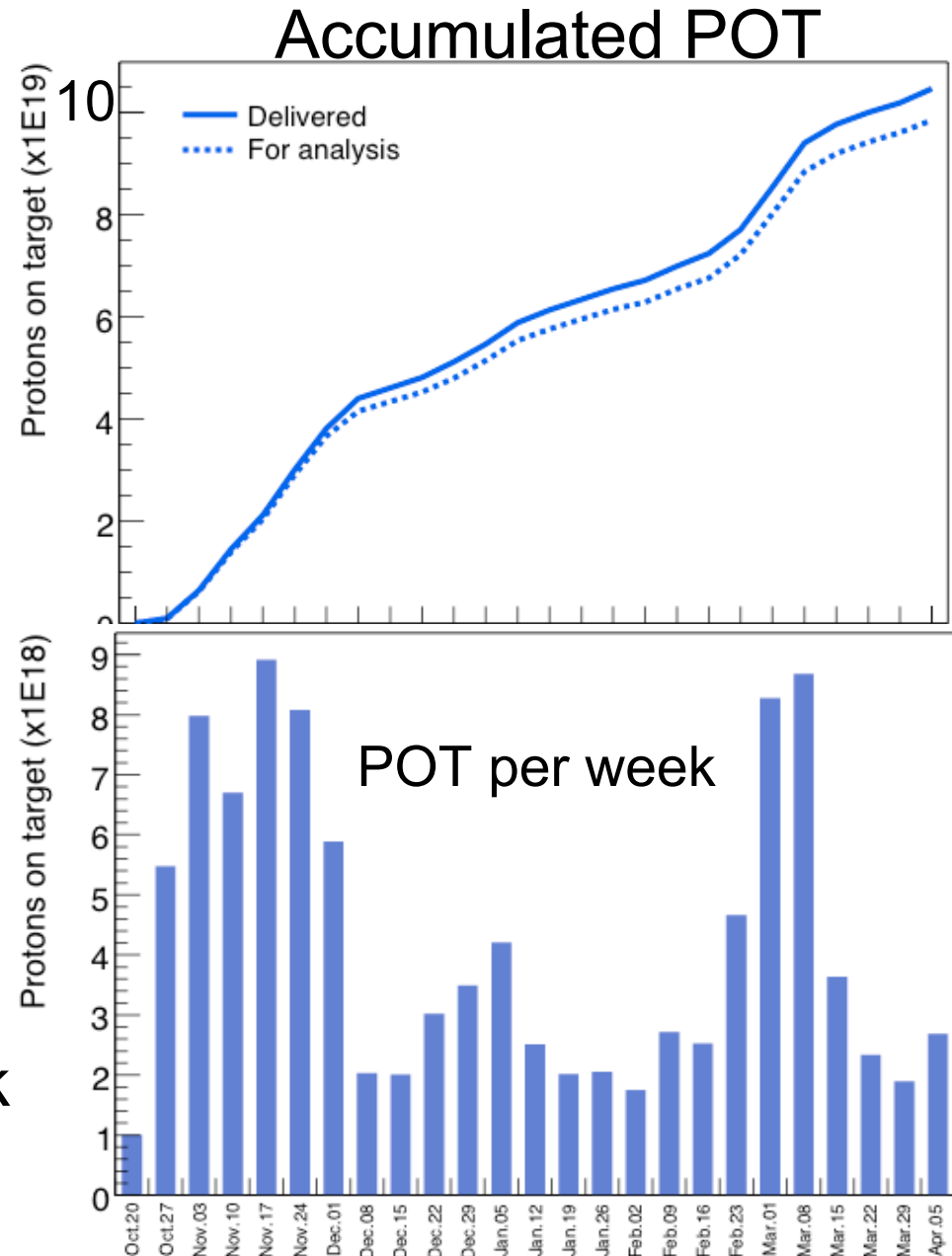
- All detector systems are stable

- No major problem

- Detector uptime (period with beam on): 89.5%

Protons On Target

- POT (Mar 29 - Apr 5)
 - 2.68E18 POT delivered,
 - 2.40E18 POT for physics.
- Total POT so far: 9.85E19
(Projected POT for ν : 1E20)
 - For physics: $\sim 0.015E20$ left
- Will switch horn polarity ($\nu \rightarrow \bar{\nu}$) April 14
 - Expected duration: ~ 1.5 week



POT normalized event rate

- Charged current event candidates in SciBar.
- Stable within stat. error.
- ➔ Stable operation of beam & detector.

Event rate per week

