



# SciBooNE (E954) status

Hide TANAKA

Columbia University

May 5, 2008 @AEM

# Week Summary Apr. 27 - May 3

- Booster Neutrino Beam

- Running smoothly

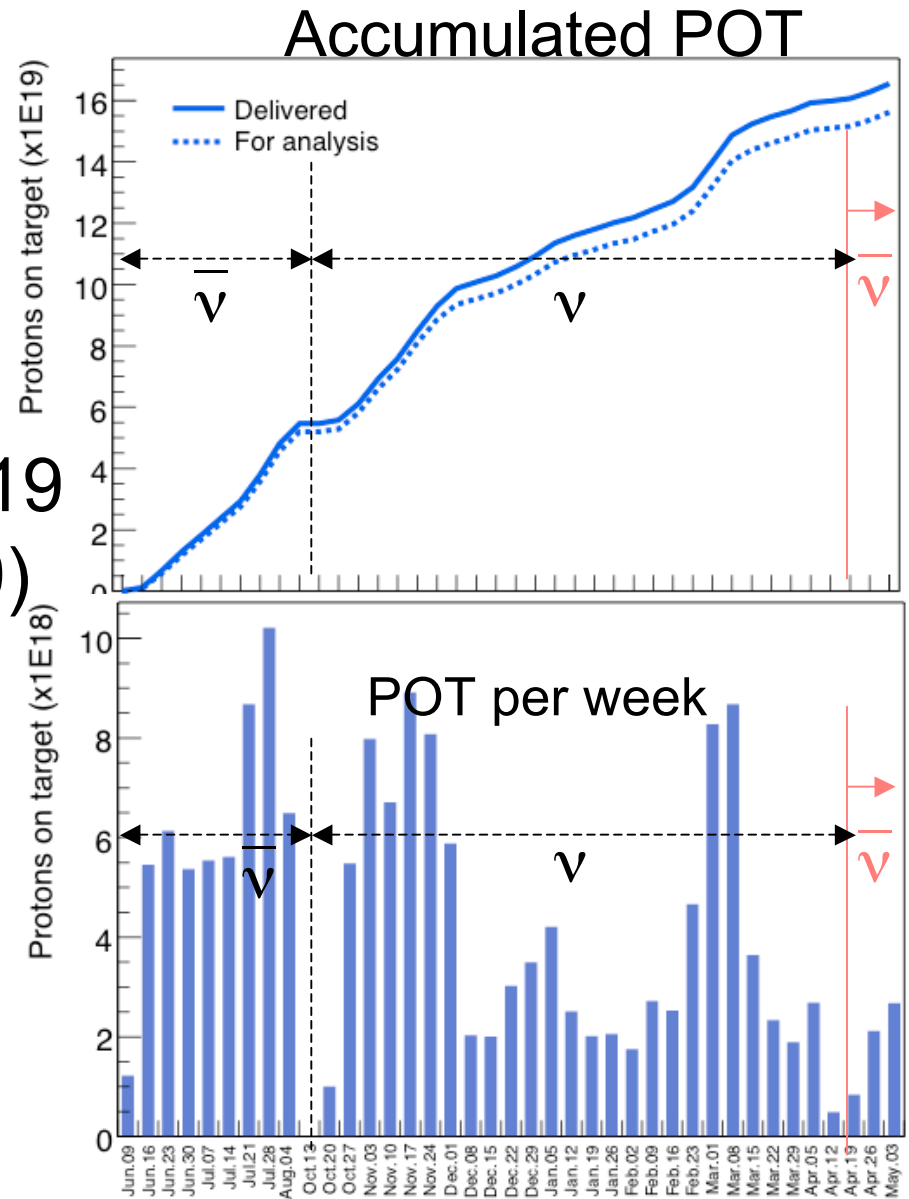
- Uptime fraction: 89.4%
  - Booster/MI access
  - Linac RF problem
  - F sector access
- Averaged protons/hr:  $1.79E16$
- Averaged protons/pulse:  $3.79E12$

- SciBooNE detectors

- Detector uptime (period with beam on): 94.1%
- SciBar, EC: stable
- MRD: HV tripped off → restarted, okay
- One of DAQ computers down: 4 times x ~1 hrs
  - Restarted, okay (for now)
  - Planning to replace the computer this week

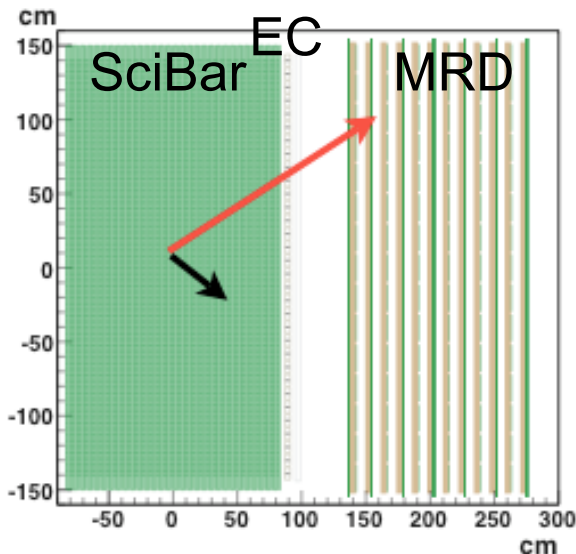
# Protons On Target

- POT (Apr 27 - May 3)
  - 2.68E18 POT delivered,
  - 2.52E18 POT for physics.
- Total POT ( $\bar{\nu}$  mode) : 5.7E19  
(Projected POT for  $\bar{\nu}$ : 1E20)
- Total POT ( $\nu + \bar{\nu}$ ): 1.56E20

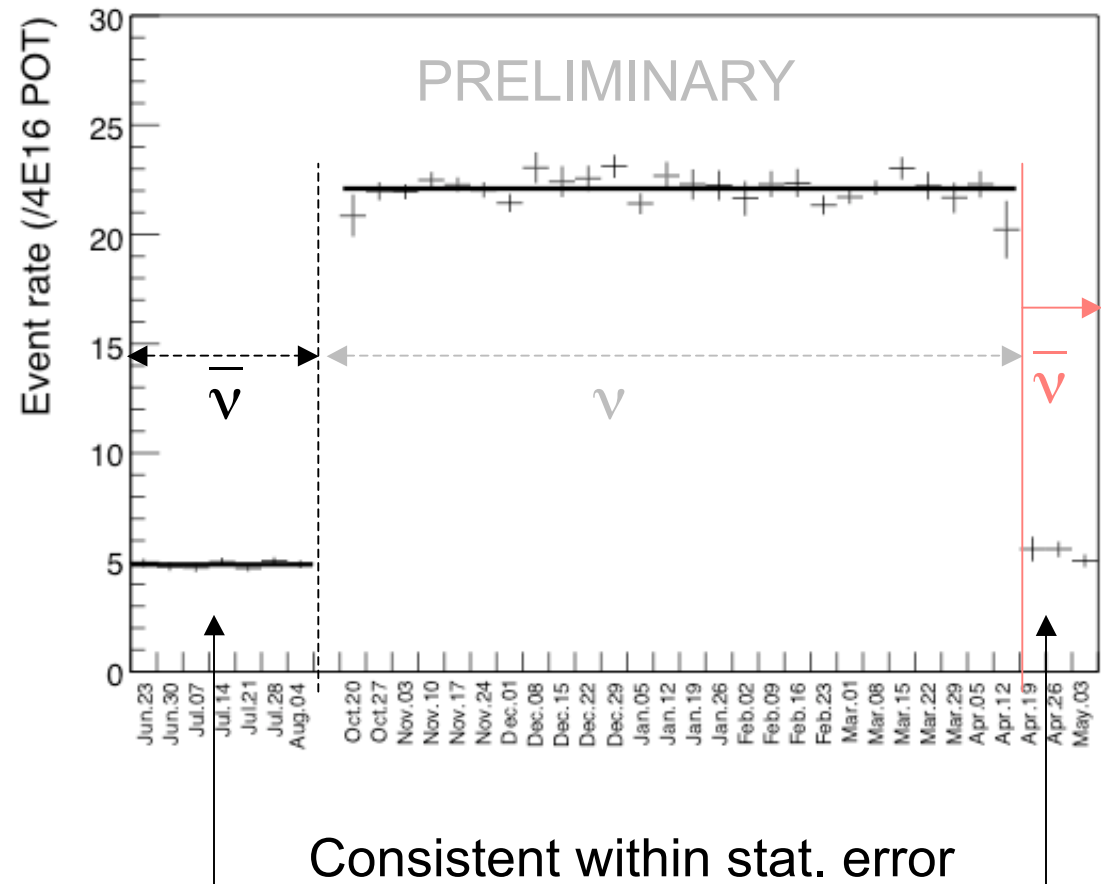


# POT normalized event rate

- Charged current event candidates in SciBar.
  - Stable within stat. error.
- ➔ Stable operation of beam & detector.



## Event rate per week



# This Week's Plan

- Planning to replace one of DAQ computers.
  - Expect this work takes ~8 hrs.
  - Schedule will be fixed.
- Continue taking data.