



SciBooNE (E954) status

Hide TANAKA
Columbia University

May 12, 2008 @AEM

Week Summary May 4 - May 10

- Booster Neutrino Beam

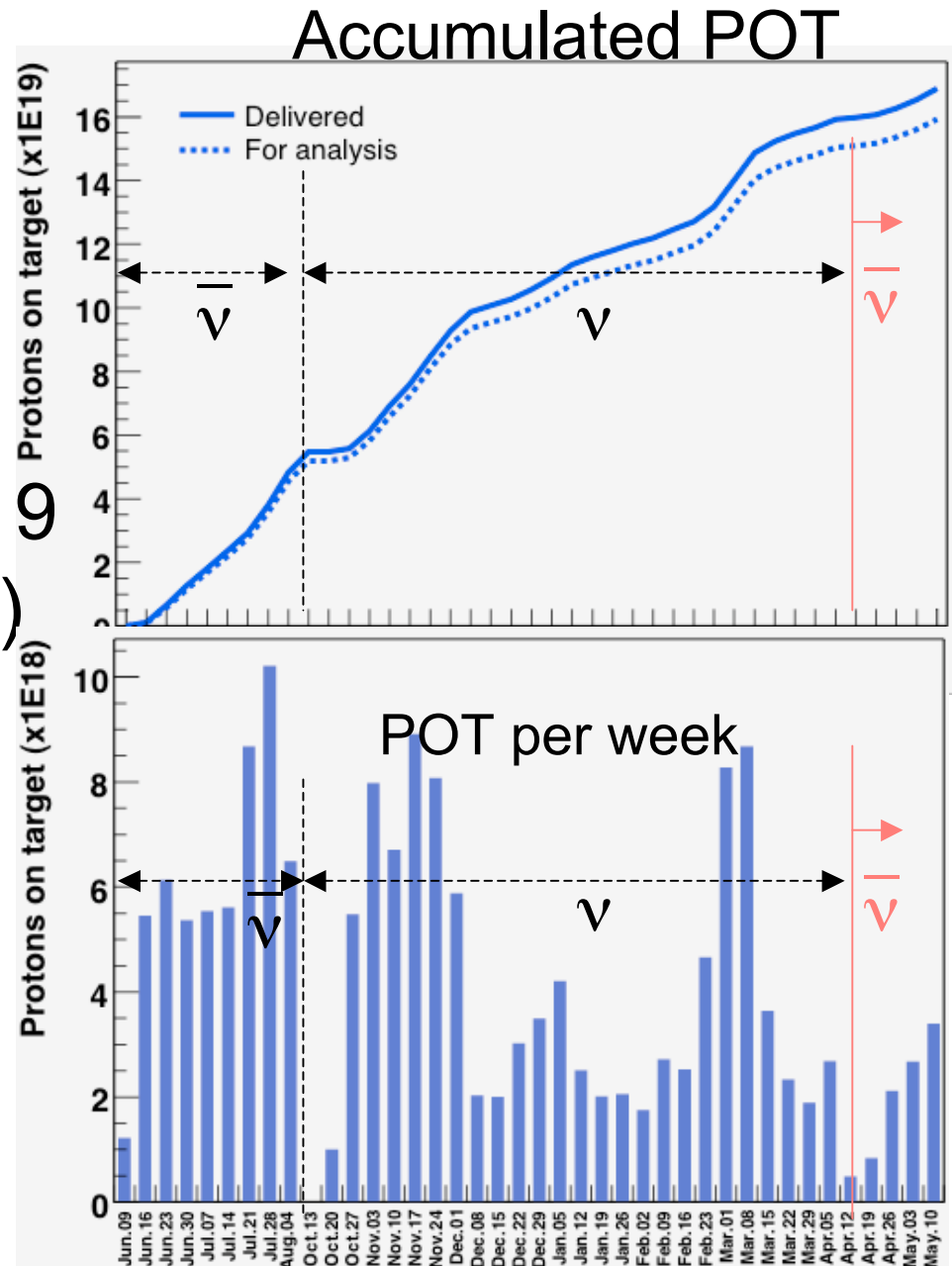
- Running smoothly, rep rate increased! (~1Hz → ~1.5Hz)
 - **Thanks AD!!**
 - Uptime fraction: 93.9%
 - Booster access
 - Booster rep rate adjustment
 - **Averaged protons/hr: 2.21E16** (cf. last week: 1.79E16)
 - Averaged protons/pulse: 3.79E12

- SciBooNE detectors

- Detector uptime (period with beam on): 93.5%
- SciBar, EC: stable
- MRD: HV tripped off → restarted, okay
- One of DAQ computers replaced (May 6): ~4 hrs

Protons On Target

- POT (May 4 - May 10)
 - 3.4E18 POT delivered,
 - 3.2E18 POT for physics.
- Total POT ($\bar{\nu}$ mode) : 6.0E19
(Projected POT for $\bar{\nu}$: 1E20)
- Total POT ($\nu + \bar{\nu}$): 1.59E20



POT normalized event rate

- Charged current event candidates in SciBar.
 - Stable within stat. error.
- ➔ Stable operation of beam & detector.

Event rate per week

