



SciBooNE (E954) status

Hide TANAKA
Columbia University

May 19, 2008 @AEM

Week Summary May 10 - May 17

- Booster Neutrino Beam

- Running very well

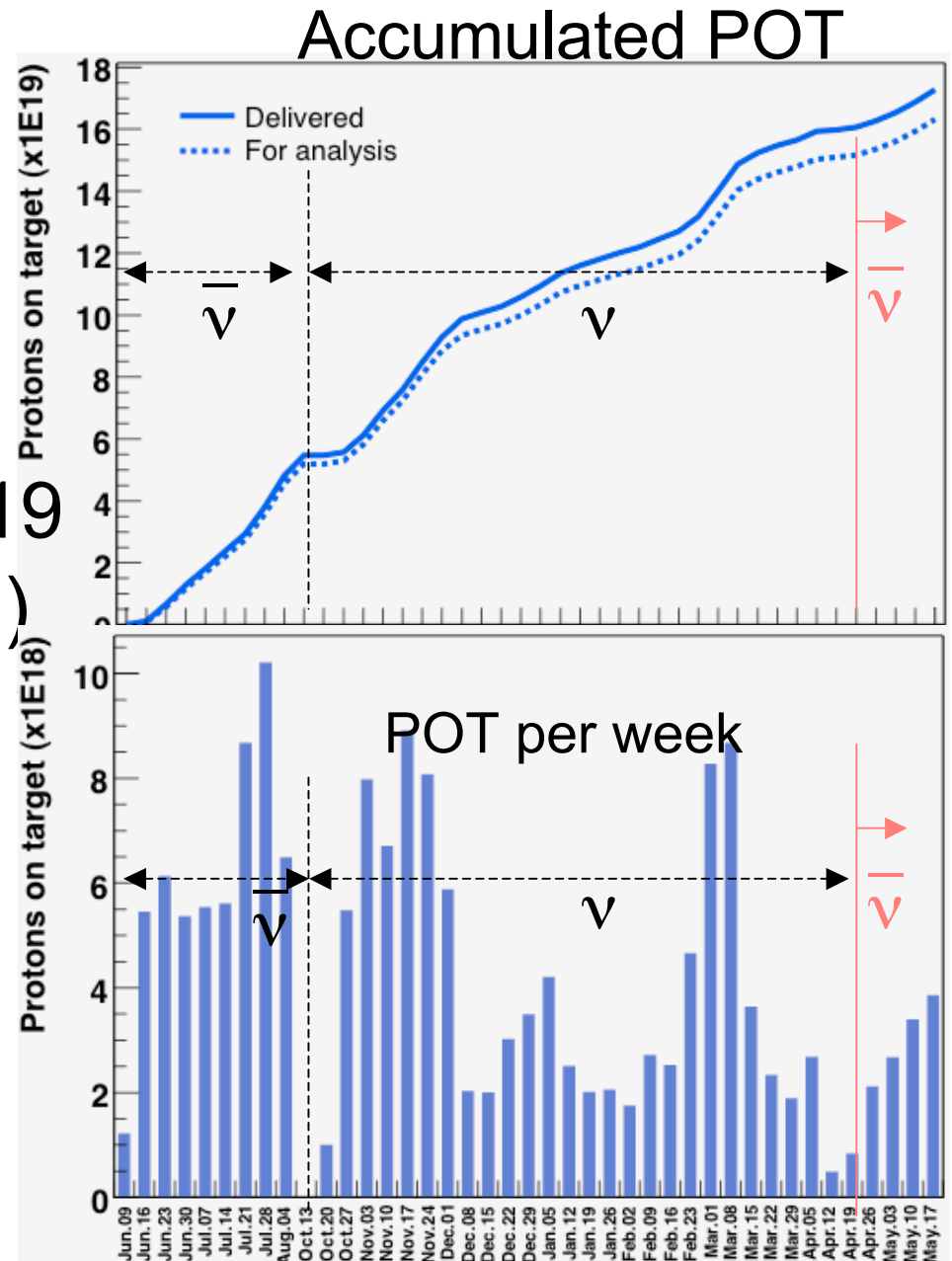
- Uptime fraction: 99.2%
- Averaged protons/hr: $2.38E16$
- Averaged protons/pulse: $4.37E12$

- SciBooNE detectors

- Detector uptime (period with beam on): 98.7%
- All detector system stable

Protons On Target

- POT (May 10 - May 17)
 - 3.86E18 POT delivered,
 - 3.81E18 POT for physics.
- Total POT ($\bar{\nu}$ mode) : 6.4E19
(Projected POT for $\bar{\nu}$: 1E20)
- Total POT ($\nu + \bar{\nu}$): 1.63E20



POT normalized event rate

- Charged current event candidates in SciBar.
- Stable within stat. error.
- ➔ Stable operation of beam & detector.

Event rate per week

