



SciBooNE (E954) status

Hide TANAKA

Columbia University

June 2, 2008 @AEM

Weeks Summary May 18 - May 31

(two week's summary)

- Booster Neutrino Beam

- Running very well

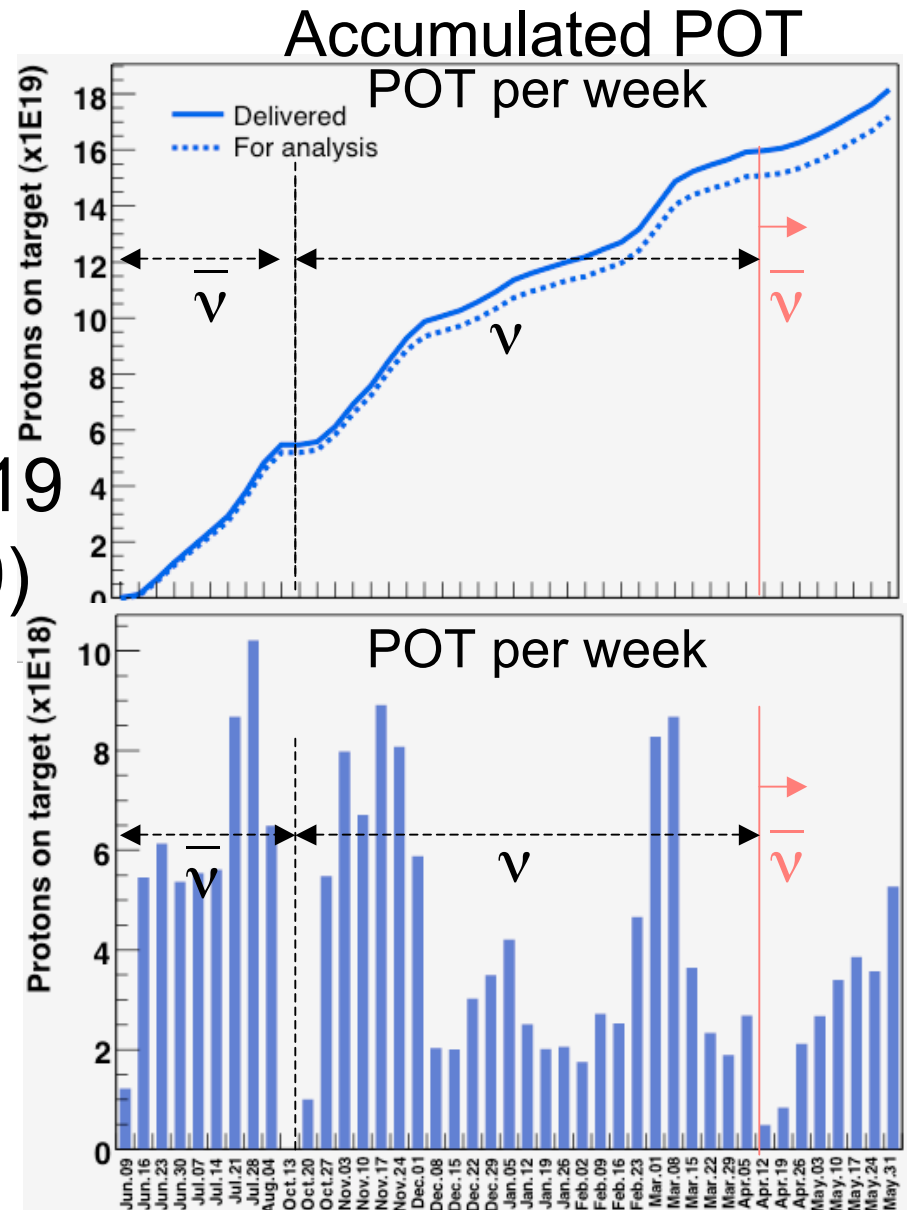
- Uptime fraction: 94.1%
- Averaged protons/hr: $2.76E16$
- Averaged protons/pulse: $3.93E12$

- SciBooNE detectors

- Detector uptime (period with beam on): 97.8%
- All detector system stable

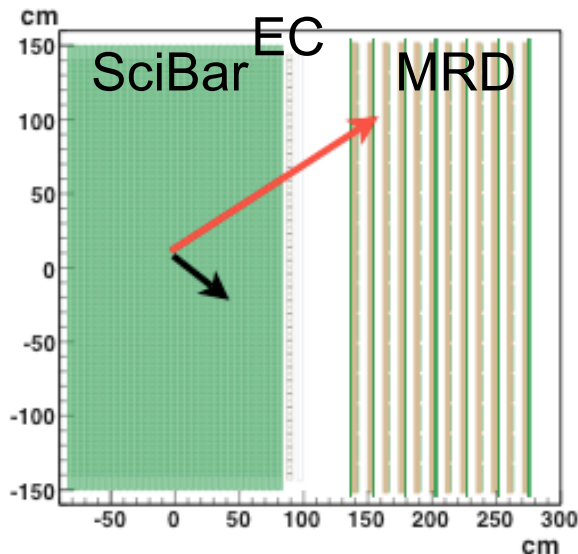
Protons On Target

- POT (May 18 - May 31)
 - 8.84E18 POT delivered,
 - 8.64E18 POT for physics.
- Total POT ($\bar{\nu}$ mode) : 7.3E19
(Projected POT for $\bar{\nu}$: 1E20)
- Total POT ($\nu + \bar{\nu}$): 1.72E20

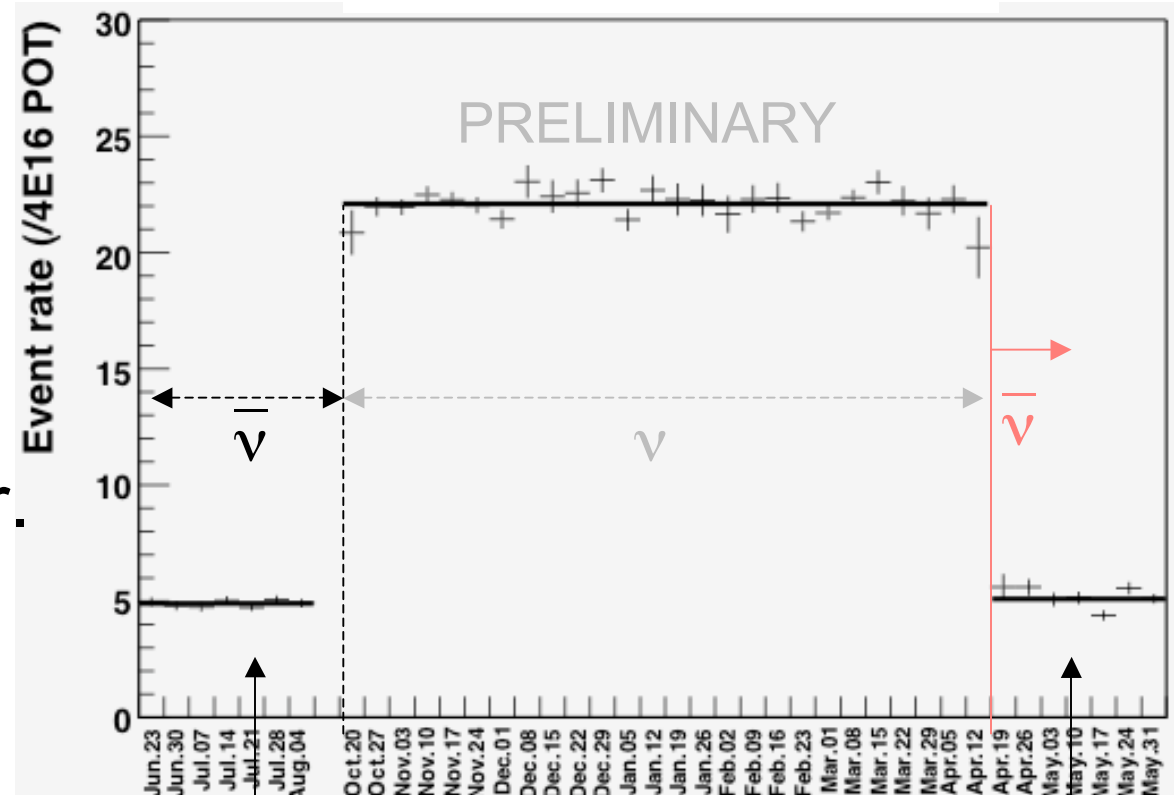


POT normalized event rate

- Charged current event candidates in SciBar.
- Stable within stat. error.
- ➔ Stable operation of beam & detector.



Event rate per week



Consistent within stat. error