

SciBooNE Status

M.O. Wascko
Imperial College London

Feb. 18, 2008 @AEM

Weekly Summary Feb 11-17

- Booster Neutrino Beam
 - Running smoothly, intensity increasing
 - *Thanks for efforts to increase BNB rates!*
 - Uptime fraction: 99.8%
 - Best week ever
 - Average proton/hr: $1.5E16$
 - Average proton/pulse: $4.3E12$
 - Best week ever
 - Great for horn lifetime!

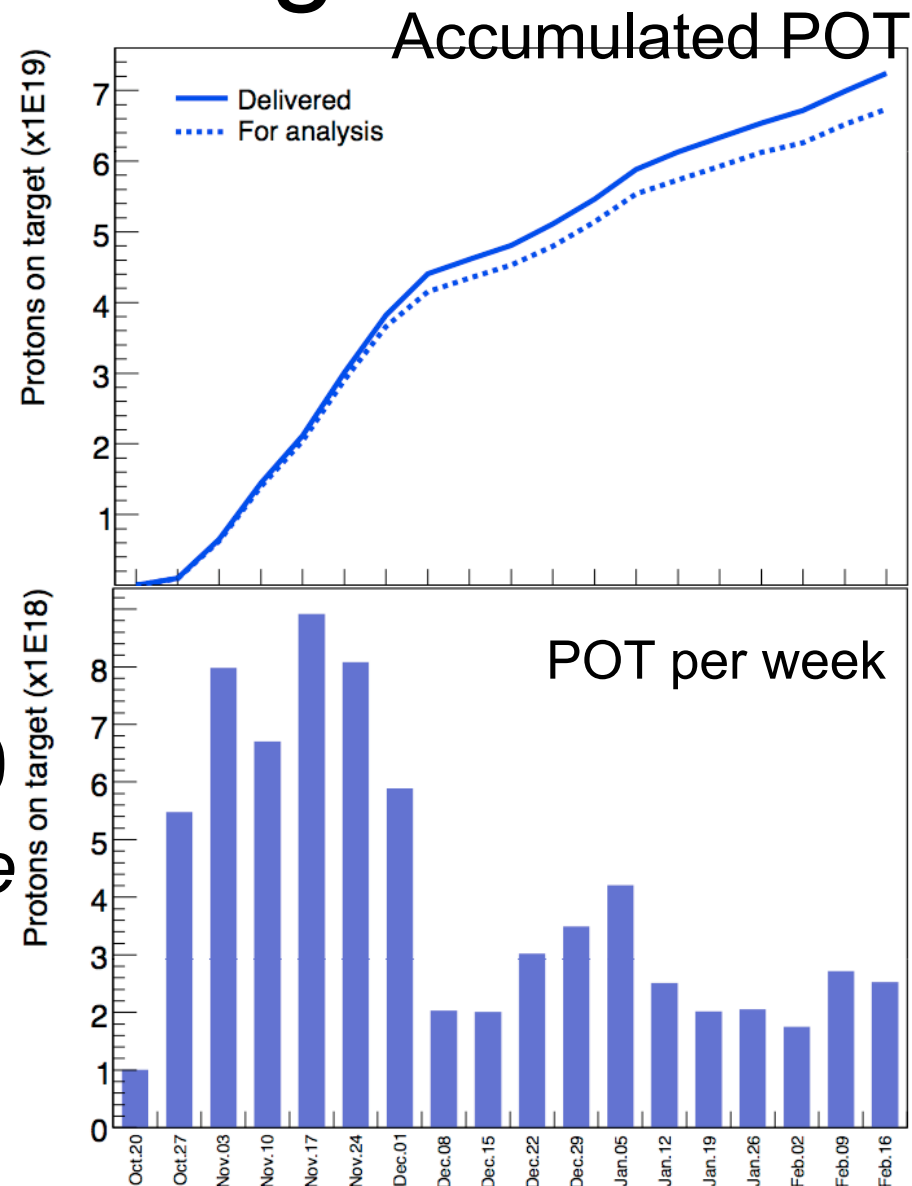
Numbers from B87 (\$1D) 20080211-20080217
(some data may have been lost Mon-Tue)

Weekly Summary Feb 11-17 (p.2)

- SciBooNE Detectors
 - Uptime: 87% (period with beam on)
 - SciBar:
 - 10 crate resets needed
 - replaced DAQ card Thursday
 - EC: stable
 - MRD: stable
 - 1 HV reset

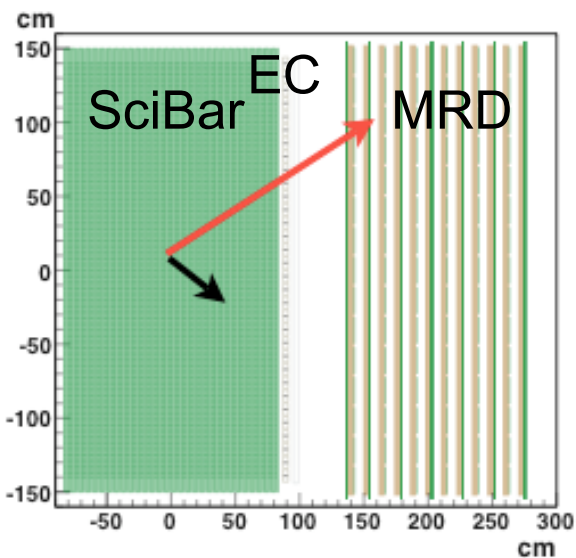
Protons On Target

- POT Collected (Feb 10-16)
 - 2.5E18 POT delivered,
 - 2.2E18 POT for analysis.
- Total POT (ν mode) 6.7E19
- Total POT ($\nu + \bar{\nu}$) 1.21E20
 - *Goal: 1E20 in each mode*
 - *Will reach ν mode goal soon (as early as April)*
 - *Switch horn polarity*



POT normalised event rate

- Charged current event candidates in SciBar.
 - Stable within stat. error.
- ➔ Stable operation of beam & detector.



Event rate per week

