

SciBooNE Status

M.O. Wascko
Imperial College London

Feb. 25, 2008 @AEM

Weekly Summary Feb 18-24

- Booster Neutrino Beam
 - Running smoothly, intensity high
 - *Extra POT for next 3 weeks makes a big difference*
 - Uptime fraction: 84.9.%
 - Average proton/hr: 4.02E16
 - Average proton/pulse: 3.25E12

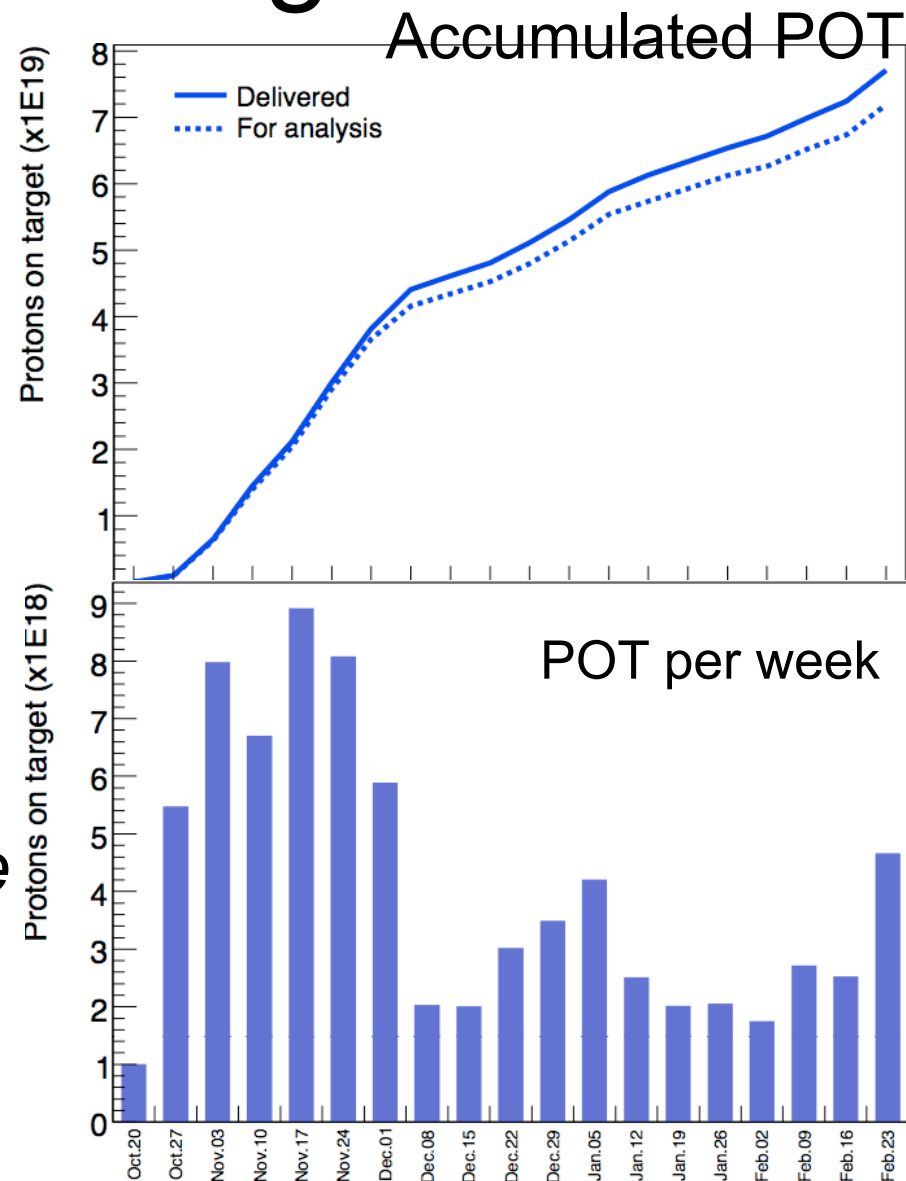
Numbers from B87 (\$1D) 20080218-20080224

Weekly Summary Feb 18-24 (p.2)

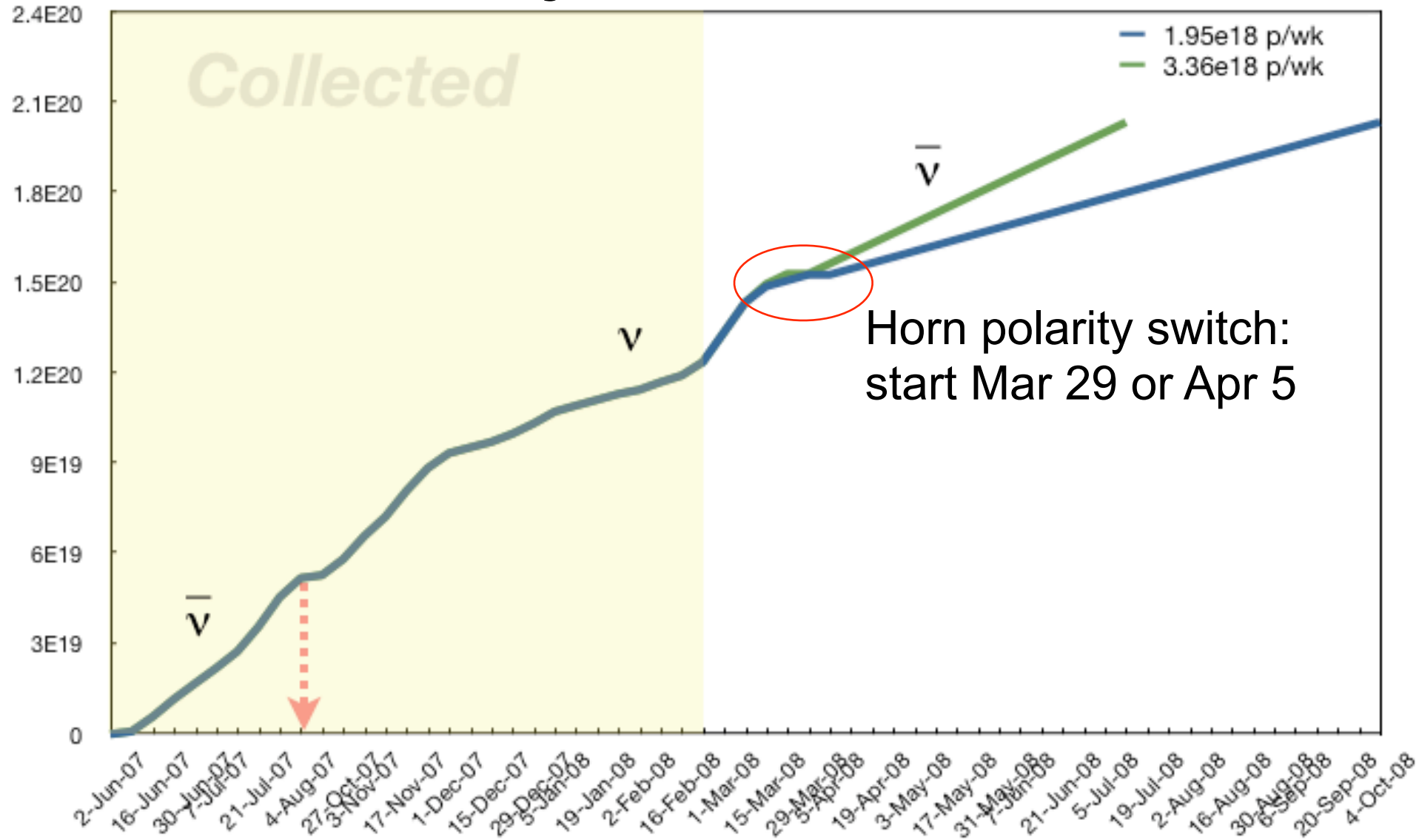
- SciBooNE Detectors
 - Uptime: 93% (period with beam on)
 - SciBar:
 - Repairs on grounding of DAQ cards Tuesday
 - Fixed recurring (and increasing) “pedestal jump” problem (no instances since)
 - No new ill effects observed
 - EC: stable
 - MRD: stable

Protons On Target

- POT Collected (Feb 17-23)
 - 4.9E18 POT delivered,
 - 4.5E18 POT for analysis.
 - *New record next week?*
- Total POT (ν mode) 7.2E19
- Total POT ($\nu + \bar{\nu}$) 1.26E20
 - *Goal: 1E20 in each mode*
 - *Soon reach ν mode goal*
 - *Switch horn polarity*



POT Projection Scenarios



POT normalised event rate

- Charged current event candidates in SciBar.
 - Stable within stat. error.
- ➔ Stable operation of beam & detector.

