

SciBooNE Status

M.O. Wascko
Imperial College London

Mar. 3, 2008 @AEM

Weekly Summary Feb 24-Mar 1

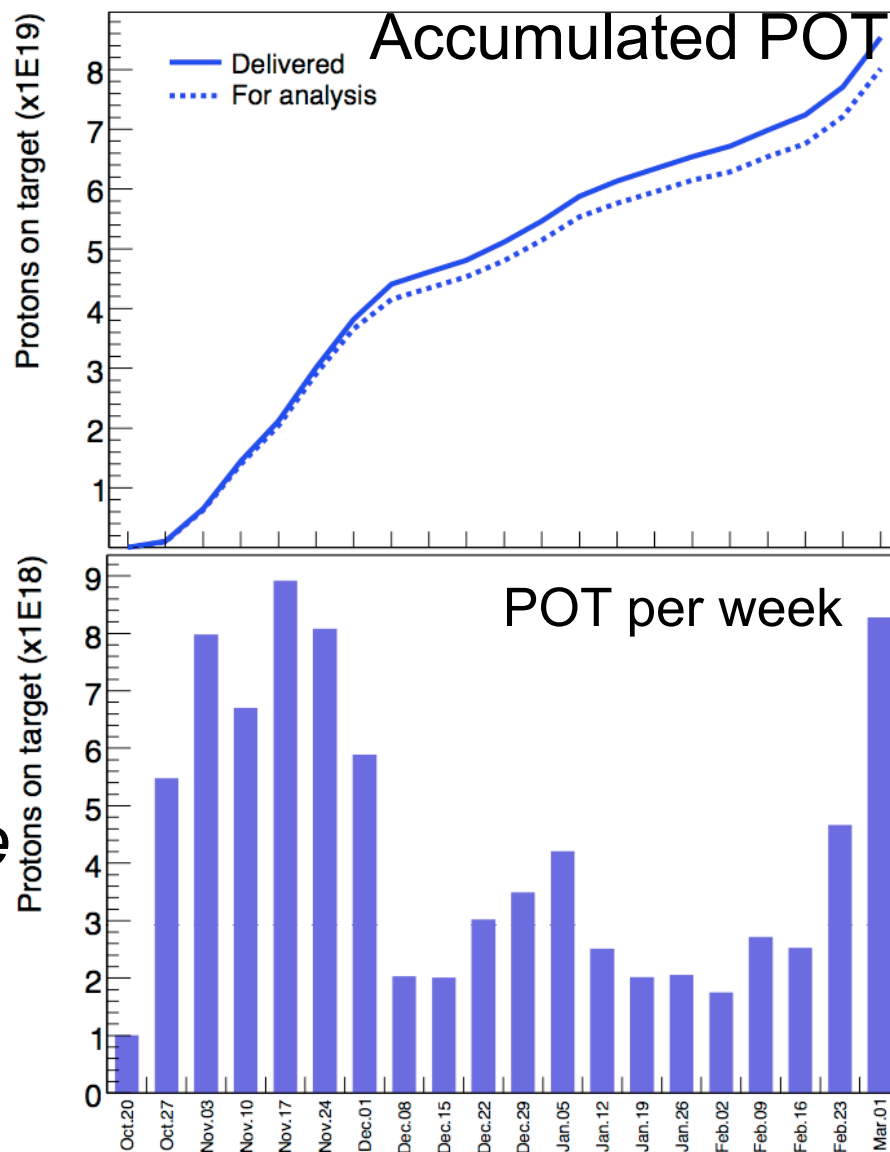
- Booster Neutrino Beam
 - Running smoothly, intensity high
 - *Extra POT making a big difference*
 - Uptime fraction: 85%
 - Average proton/hr: $5.78E16$
 - Average proton/pulse: $3.54E12$

Weekly Summary Feb 24-Mar 1

- SciBooNE Detectors
 - Uptime: 97% (period with beam on)
 - Tied for best week ever
 - SciBar:
 - Thu - One pedestal jump
 - Fri - Replaced one HV card
 - EC: stable
 - MRD: stable

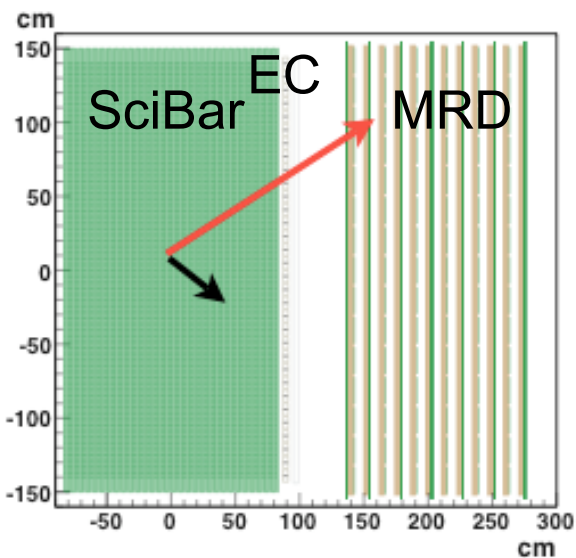
Protons On Target

- POT Collected (Feb 24-Mar 1)
 - 8.28E18 POT delivered,
 - 8.04E18 POT for analysis.
 - *New record next week?*
- Total POT (ν mode) 8.0E19
- Total POT ($\nu + \bar{\nu}$) 1.34E20
 - *Goal: 1E20 in each mode*
 - *Soon reach ν mode goal*
 - *Switch horn polarity*

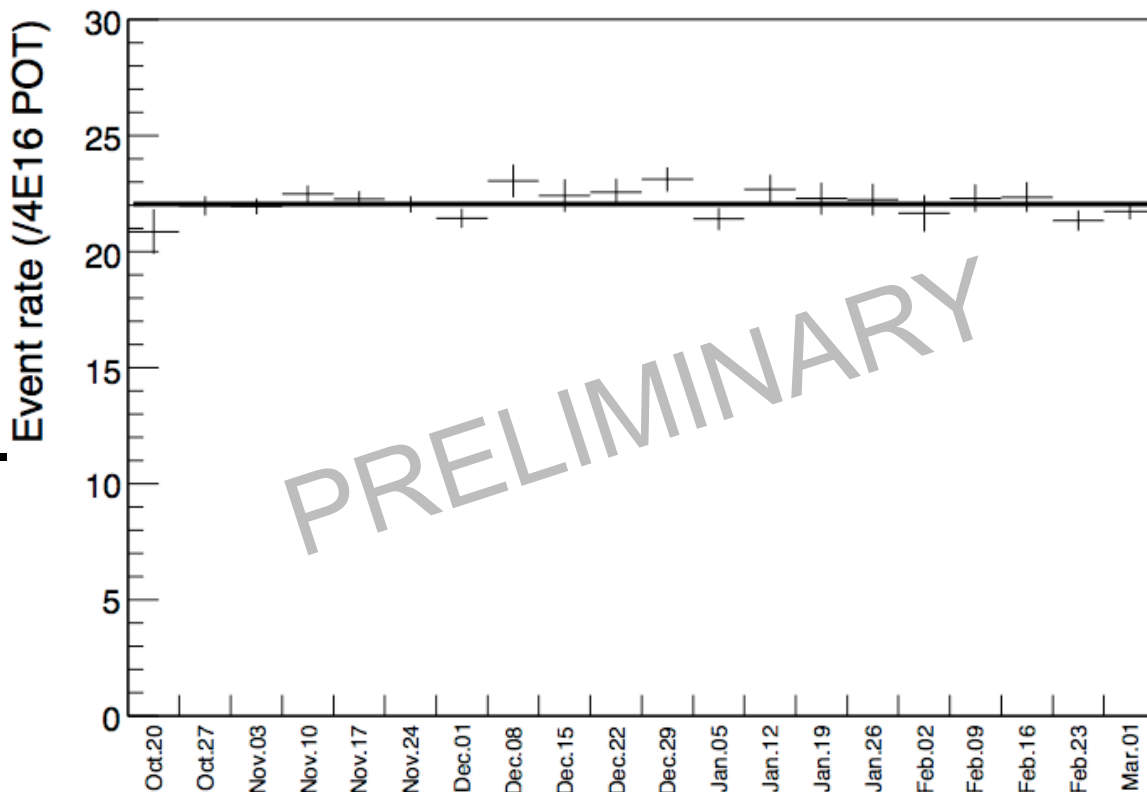


POT normalised event rate

- Charged current event candidates in SciBar.
 - Stable within stat. error.
- ➔ Stable operation of beam & detector.



Event rate per week



POT Projection Scenarios

