

SciBooNE Report

M.O. Wascko
Imperial College London

Apr. 21, 2008 @AEM

Weekly Summary Apr 13-19

- Booster Neutrino Beam

- First week back in antineutrino mode!
- Running smoothly, intensity low
 - Uptime fraction: 62.5%
 - Average proton/hr: $8.11E15$
 - Average proton/pulse: $3.41E12$

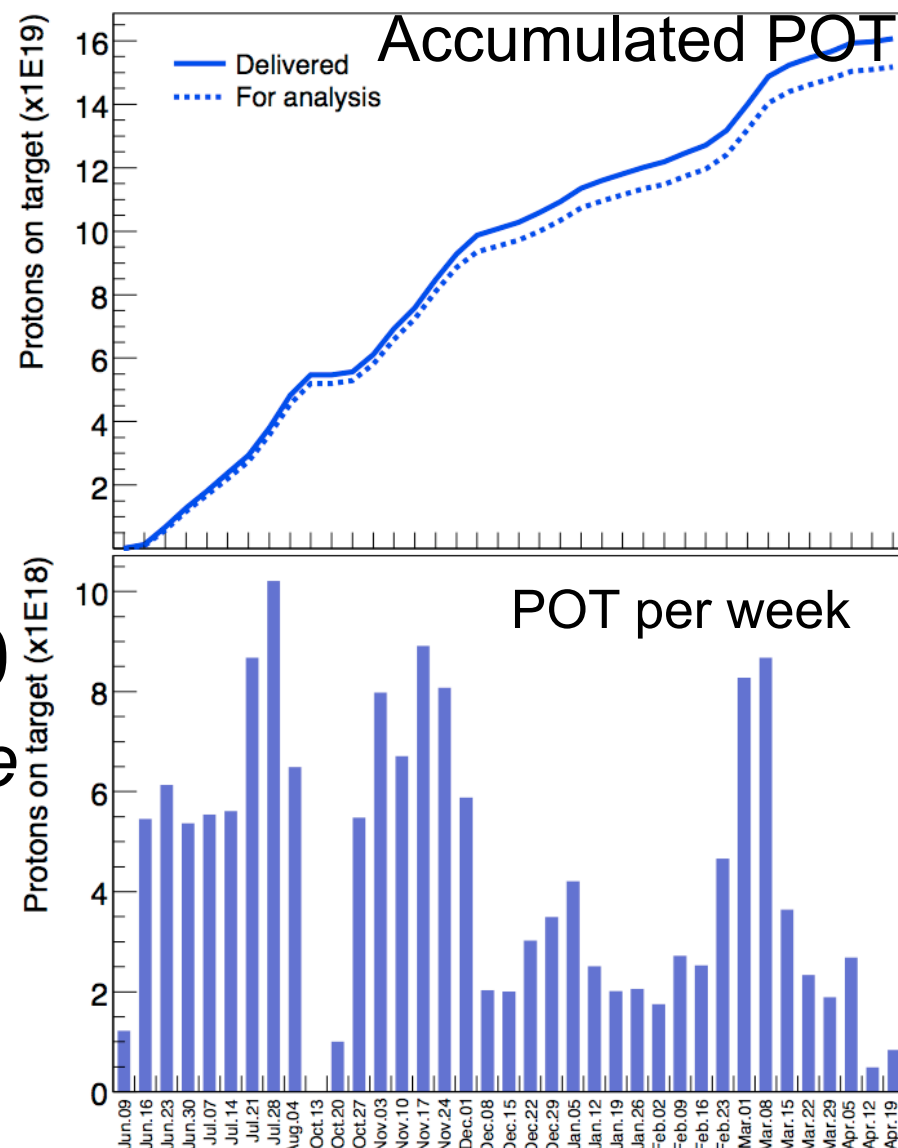
Numbers from B87 (\$1D) 20080413-20080420

- SciBooNE Detectors

- Uptime: 94.5% (period with beam on)
- SciBar: stable
- EC: stable
- MRD: 1 HV trip Fri, otherwise stable

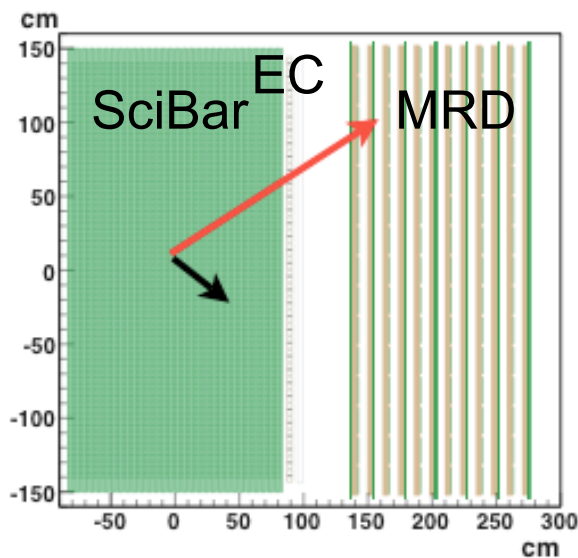
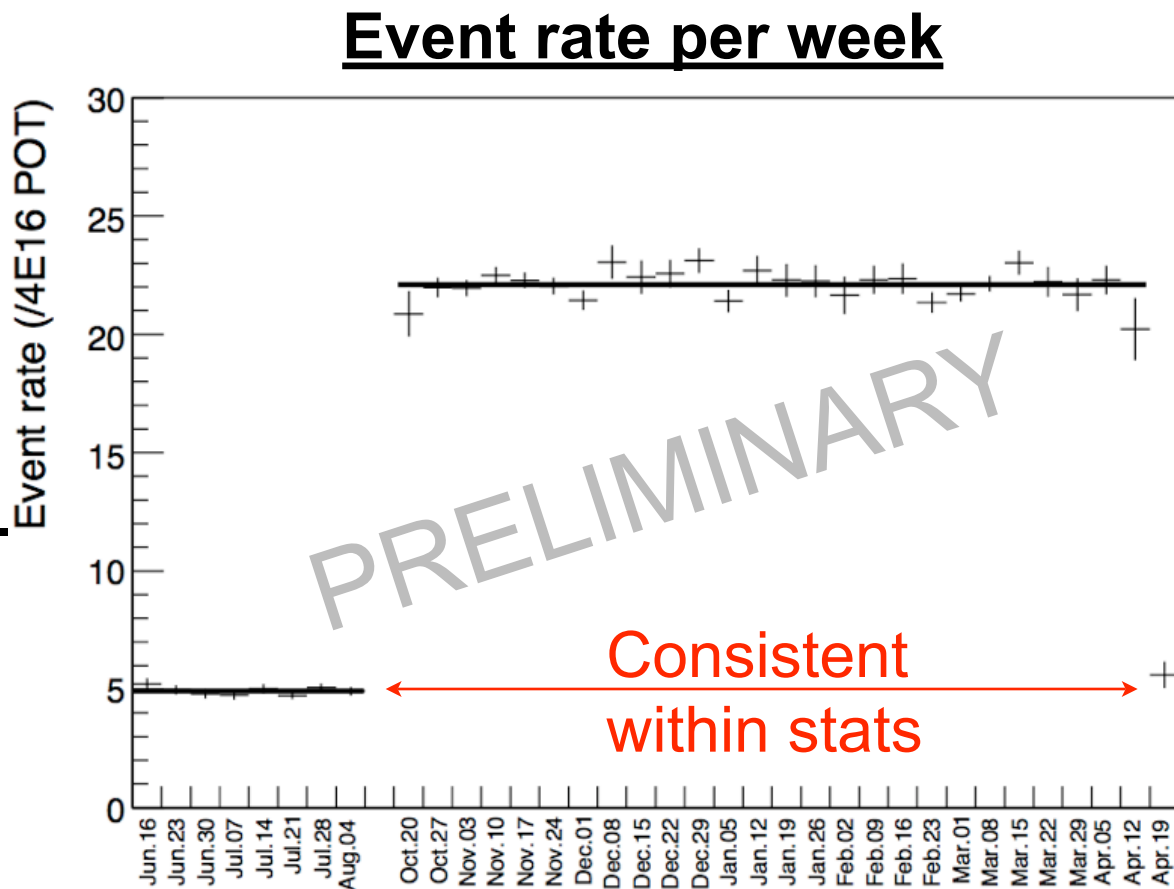
Protons On Target

- POT Collected (Apr 13-19)
 - 0.84E18 POT delivered,
 - 0.82E18 POT for analysis.
- Total POT ($\bar{\nu}$ mode) 5.3E19
- Total POT ($\nu + \bar{\nu}$) 1.52E20
 - *Goal: 1E20 in each mode*



POT normalised event rate

- Charged current event candidates in SciBar.
 - Stable within stat. error.
- ➔ Stable operation of beam & detector.



POT Projection Scenarios

